

# Ruwac USA Industrial Vacuums

## WNS & WS Series

### Parts Manual

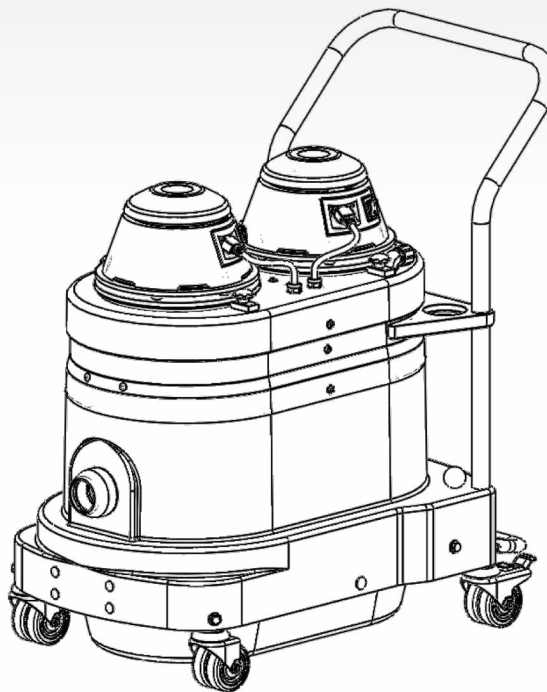
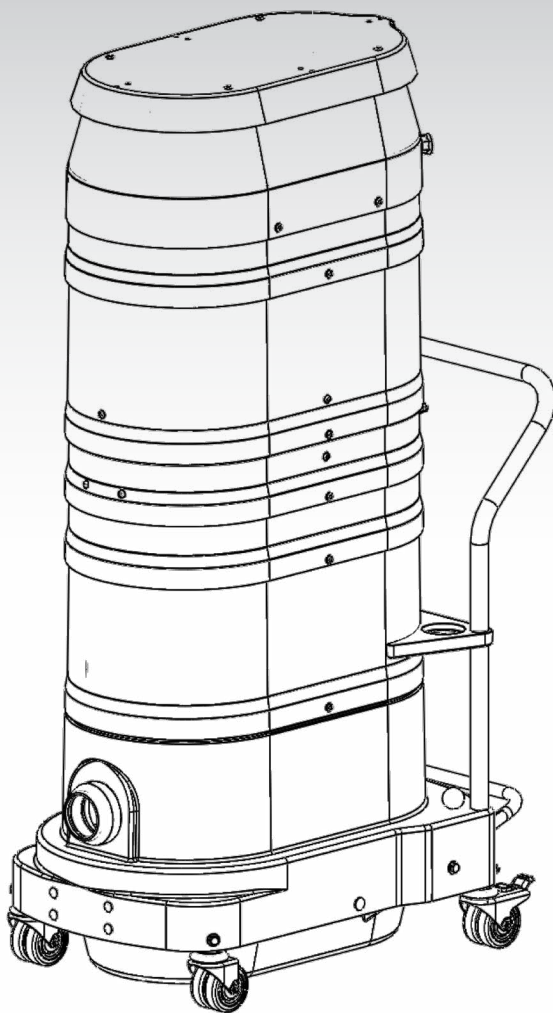
---

Model No.

Serial No.

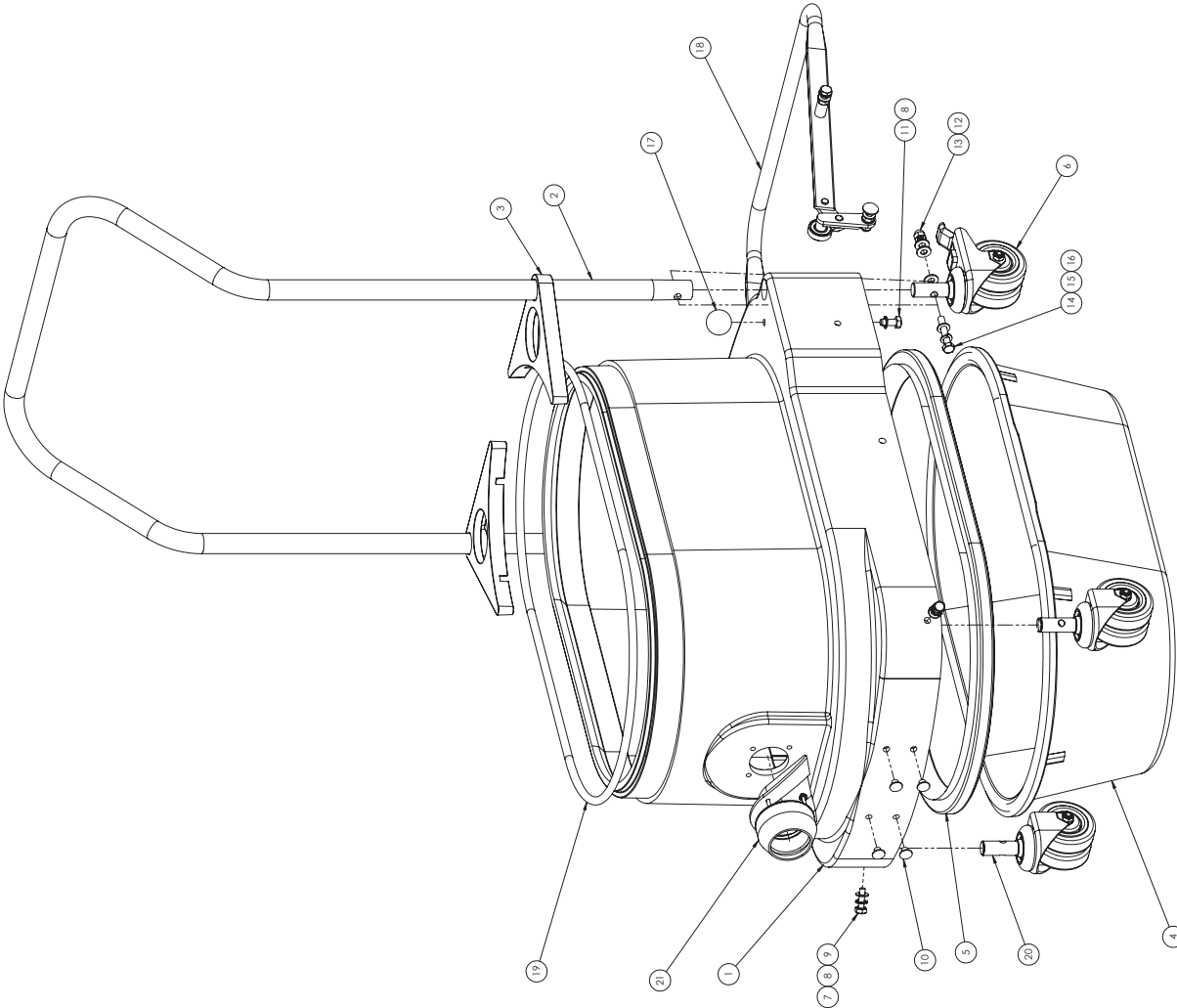
Filter No.

Start-Up Date



Version: 2.0

REV	DESCRIPTION	DATE	NAME
A	ADDED INLET ASSEMBLY PER ECO 1283	11/3/16	DJE



ITEM NO.	PART NO.	DESCRIPTION	DRAWING NO.	QTY.
1	34809002	LOWER HOUSING, D1, 50MM, RED		1
2	25080	PUSH HANDLE, D1, W2		1
3	32039E	HANDLE SUPPORT, PLASTIC		2
4	34813	D1 DUSTPAN WITH GASKET, RED		1
5	20070	D1 LOWER HOUSING GASKET		1
6	25085	CASTER, DUAL, FIXED, 75MM WITH BRAKE		2
7	34882	WASHER FLAT/THIN M8 ZINC		2
8	25037	WASHER EXT STAR M8 ZINC		3
9	25054	BOLT HEX M8 X 25		2
10	22120	PLUG, BMM, BLK		4
11	25068	BOLT HEX M8 X 20		1
12	20090	WASHER M8 BLK NYLON		6
13	32927	ACORN NUT M8		2
14	34810	HEX BOLT M8 X 50		2
15	20050	WASHER SPIIT LOCK M8		2
16	25061	M8 FLAT WASHER		2
17	25060	KNOB BLACK, BMM		1
18	2001A	D1 DUSTPAN LEVER ASM	000 E 0015 US	1
19	25082	GASKET, DUAL, ZINC		1
20	34882	CASTER, DUAL, FIXED, 75MM		2
21	2005A	50MM ALU INLET ASSEMBLY	000 E 0113 US	1

UNLESS OTHERWISE SPECIFIED:	UNITS:	DATE:	4/15/16
ALL DIMENSIONS ARE IN INCHES			
FRONT VIEW (F.V.)	TOP VIEW (T.V.)	RIGHT SIDE VIEW (R.S.V.)	LEFT SIDE VIEW (L.S.V.)
SECTION A-A	SECTION B-B	SECTION C-C	SECTION D-D
TITLE: D1 BASE ASSEMBLY, 50MM, RED			
SIZE: DWG. NO. 34809A50			
REV. D 000 E 0318 US			
SCALE: 1:3 (WEIGHT)			
SHEET 1 OF 1			





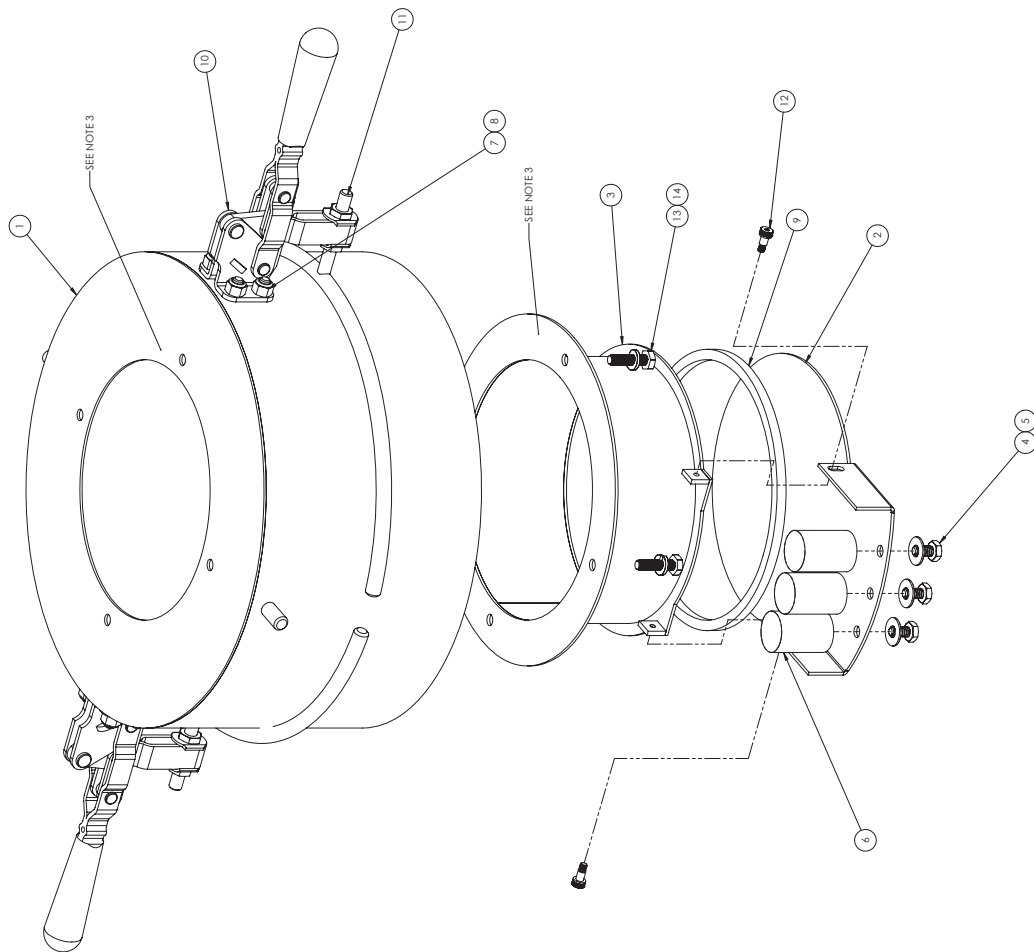




ZONE	REV.	DESCRIPTION	DATE	APPROVED
	A	NO ECO: RELEASED TO A	6/23/2017	D.E

NOTES:

1. ADHERE **9** TO **3** USING 3M SCOTCH WELD
2. APPLY LOCITITE TO **4**
3. USE SILICONE TO SEAL SURFACE



ITEM NO.	PART NO.	DESCRIPTION	SHUT/QT.
1	970540	DIRECT BAGGER, DROP BODY BARREL	1
2	970642	LID, DROP BODY, LONGOPAC	1
3	970641	CHUTE, DROP BODY, LONGOPAC	1
4	25003	HEX BOLT 1/4-20, .5LG	3
5	200180	WASHER FLAT .321 (4880D) SS	3
6	970543	DIRECT BAGGER, COUNTER WEIGHT	3
7		NUT, LOCK, .25-20, ZINC	8
8	250030	BOLT HEX 1/4-20 x 5/8"	8
9		SQUARE GASKET, .25, NITRILE	1
10	250984	CLAMP, TOGGLE DEVIAT CO	2
11	9014101	CLAMP EXTENSION, DR GRANT CO	2
12	970545	CLAMP EXTENSION, DR GRANT CO	2
13	25003	SCREW, SHOULDER .5 S2	2
14	200183	1/4-20 X 1/2 CLAMP WASH-SS	2

40001				UNLESS OTHERWISE SPECIFIED:	NAME	DATE	54 Winter St. Holyoke, Ma. 01040
				QUANTITIES ARE IN POUNDS	DEPIN	5/23/16	
				TOLERANCES	CONCRETE		ITL F:

	Q.A.	INFO APPR.	BKG APPR.	COUNTDOWN
FRACTIONAL 1716*				
ANGULAR INACT 307 BB ID #307				
TWO PLACE DECIMAL ± 0.5				
THREE PLACE DECIMAL ± .005				

[illegible]

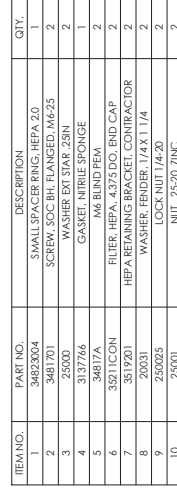
FORM A-11	WEIGHT	SCALE: 2:3	WEIGHT:	SHEET 1 OF 1
APPLICATION				





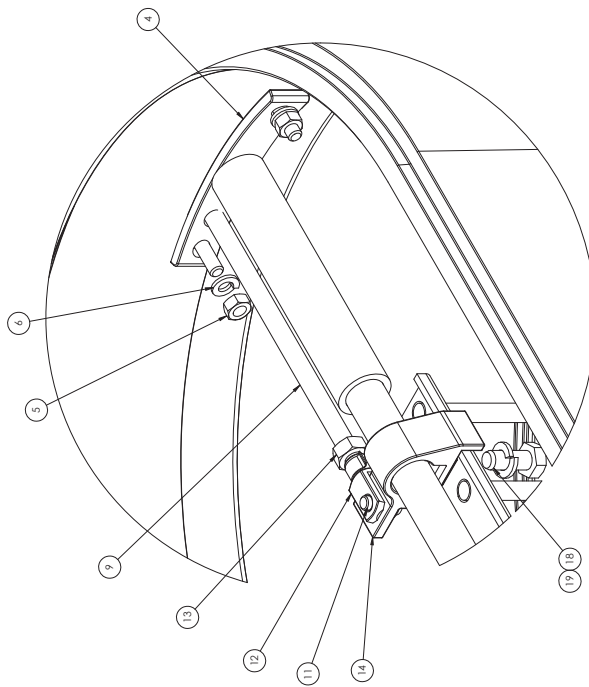




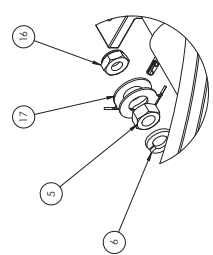
[illegible]

[illegible]

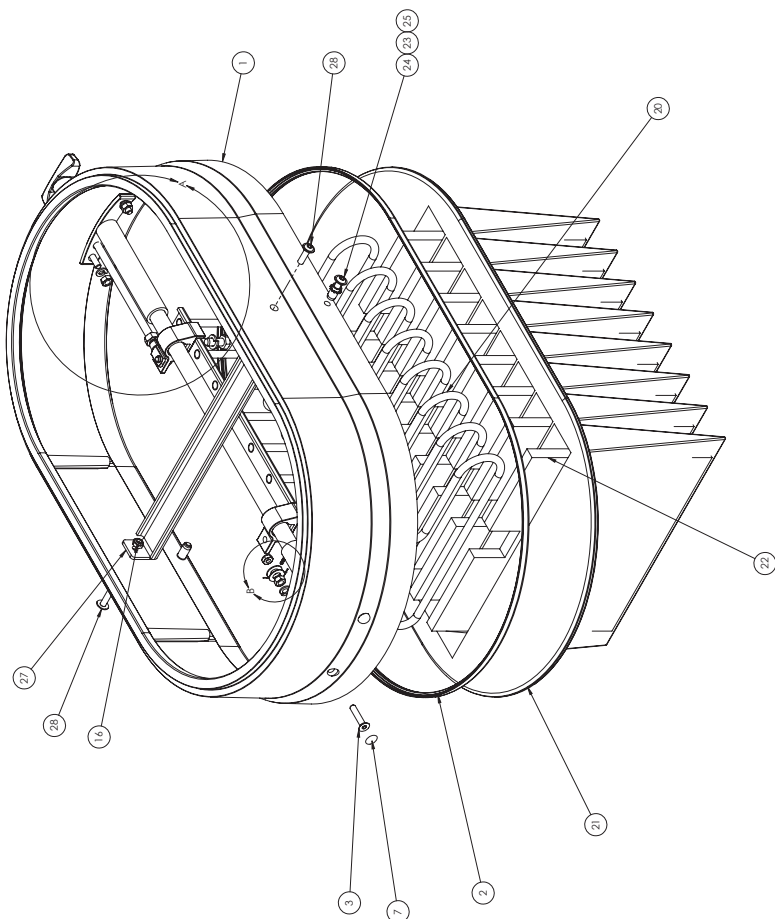
REVISIONS		DATE	NAME
REV	DESCRIPTION		



DETAIL A  
SCALE 1:1



DETAIL B  
SCALE 1:1



ITEM NO.	PART NO.	DESCRIPTION	DRAWING NO.	QTY.
1	34823X02	HOUSING SPACER, DI. PORT, SMALL, RED		1
2	3137766	GASKET, NITRILE SPONGE		1
3	34815	SCREW, SOC FH M6 X 30		4
4	34806	SHAKER ROD MOUNTING SUPPORT		2
5	20040	NUT HEX M6		4
6	20039	WASHER LOCK M6		4
7	34871	PLASTIC PLUG, 4.5/13		4
8	34805	CLEAR HOSE, 3/4" ID		2
9	22565	SHAKER BAR W/ SWIVEL HANDLE		1
10	34804	MANUAL SHAKER BAR		1
11	34879	SPRING CLIP 6 X 12		1
12	25047	CLEVIS, AX12, M8 RHT		1
13	20044	HEX NUT M8, ZINC		1
14	34802	FILTER SLIDE GUIDE, PLASTIC		2
15	20045	NUT, SQUARE, M8		2
16	34876	M6 LOCK NUT		3
17	34998	GROUND CONNECTOR		2
18	25038	BOLT HEX M8 X 20		2
19	20050	WASHER SPLIT LOCK M8		2
20	25056	FILTER SUPPORT WELDMENT 1.2M		1
21	20091	1.2M FILTER		1
22	20091 F	FLIKER INSERT		8
23	34817A	M6 BLIND FEN		2
24	3481701	SCREW, SOC BH FLANGED, M6-25		2
25	25000	WASHER EXT SPR 1/4"		2
26	34808	FLIKER DEFLECTOR		1
27	30095	GROUND FILTER BAR SUPPORT		1
28	34817	SCREW US SOC LD M6 X 20		2

TITLE: 1.2M FILTER ASSEMBLY, MANUAL SHAKER, RED, SILCO DATE: 6/13/15 DRAWN BY: [blank] CHECKED BY: [blank] DESIGNED BY: [blank] PARTS LISTED: [blank] PARTS LISTED: [blank] PARTS LISTED: [blank]	NAME: [blank] DATE: 6/13/15 COMMENTS: [blank]	SIZE: DWG. NO. 000 E 0340 US SCALE: 12.5WEGE: [blank]	REV: L SHEET 1 OF 1
--	---	--	------------------------

FOR INFORMATION ONLY: THIS DRAWING IS NOT TO BE USED FOR CONSTRUCTION OF THE PRODUCT WITHOUT THE WRITTEN APPROVAL OF THE DESIGNER. ANY CHANGES TO THE PRODUCT MUST BE APPROVED BY THE DESIGNER.



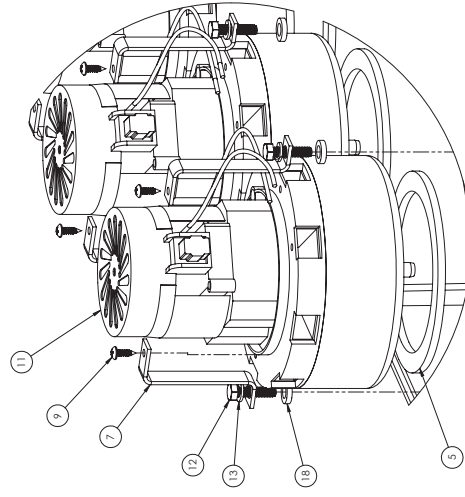
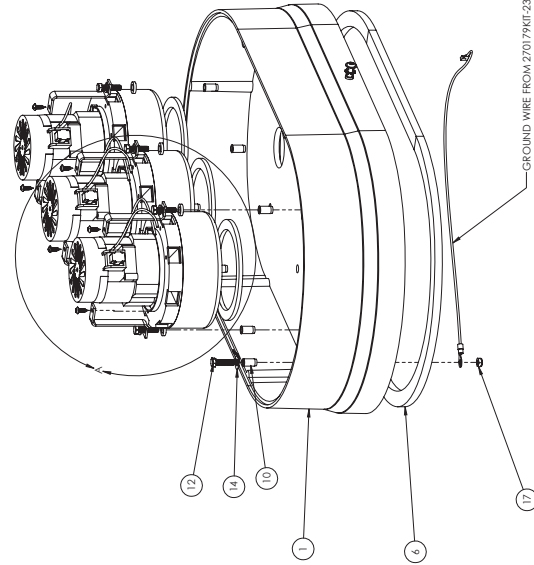
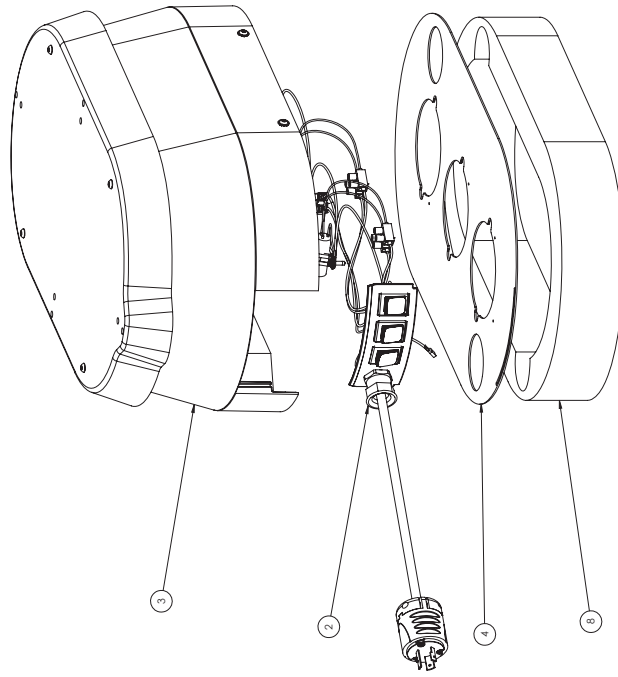










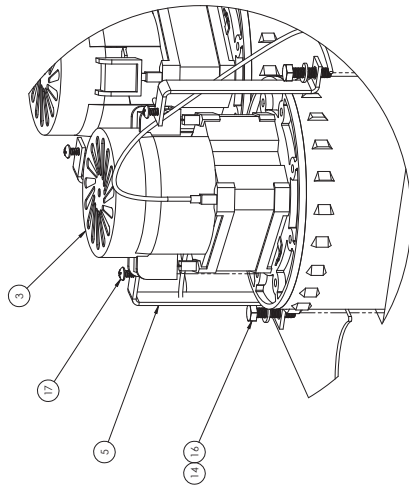


DETAIL A  
SCALE 2:3

ITEM NO.	PART NO.	DESCRIPTION	DRAWING NO.	QTY.
1	3468002	WS MOTOR DECK, 3 HOLES, RED		1
2	PH27017A3	WS 3 MOTOR SWITCH ASM, 220V	000'E 0199 US	1
3	PH3468002A02	WS 3 MOTOR SWITCH ASM	000'E 0130 US	1
4	346804	AIR CHANNEL PLATE, 3 MOTOR, METAL		1
5	32967	MOTOR HEAD GASKET		1
6	32934	GASKET, .375IN X .75IN .A3IN LG		5,25FT
7	346826	MOTOR HOLD DOWN-BRACKET		6
8	34684	SILENCER FOAM, W2 LOWER		1
9	27012	SCREW PH PHIL #8 X .5Z ZINC		1
10	34617A	M6 BLIND PEM		9
11	116549-13	MOTOR 2 STAGE, 1200W, 240V		3
12	34654	BOLT HEX, M6x25		7
13	20399	WASHER LOCK M6		6
14	34698	GROUND CONNECTOR		1
15	3461701	SCREW SOC RH FLANGED, M6x25		2
16	25000	WASHER R15 STAY, 25IN		2
17	34676	M6 LOCK NUT		1
18	203432	NYLON WASHER R15, 25IN		4

[illegible]

—GROUND WIRE FROM 270179KIT-2320



DETAIL A  
SCALE 2:3

ITEM NO.	PART NO.	DESCRIPTION	DRAWING NO.	QTY.
1	398602	WS MOTOR DECK, 3 HOLES, RED		1
2	270717/L44	W32303 SWITCH ASM, 240V, HIGH LIFT	000 E 0334 US	1
3	116350	MOTOR, 220V, 100CFM, 150N/420		3
4	PH349DA05	WS SLEICER 3 MOTOR, ASST, HIGH LIFT MOTOR	000 E 0273 US	1
5	348261	220V MOTOR HOLD DOWN		6
6	349660	AIR CHAINELTATE, HD, 3 MOTOR, METAL		1
7	349854	SLEICER FOM, WZ, LOWER		1
8	525734	GASKET, 3.55N1A, 7.5N1, 4.5N1 LG		5.25 FT
9	230952/301	GASKET 3IN OD X 22.5N ID X .189-5N THK		3
10	349995	GROUND CONNECTOR		1
11	34817A	WS 6 HOLE DECK		1
12	34817A	SCREW, SOH, 1/8" DIA, HD, M4-25		9
13	250500	SCREW, SOH, 1/4" DIA, HD, M4-25		2
14	200319	WASHER, OCT FLAT, 55N		2
15	348974	M41 LOCK W/ KEY		1
16	348554	ROTI, HEX, M4X, 50 ZINC		6
17	270712	SCREW, RH, PHIL, #8 X, 50 ZINC		6

[illegible]



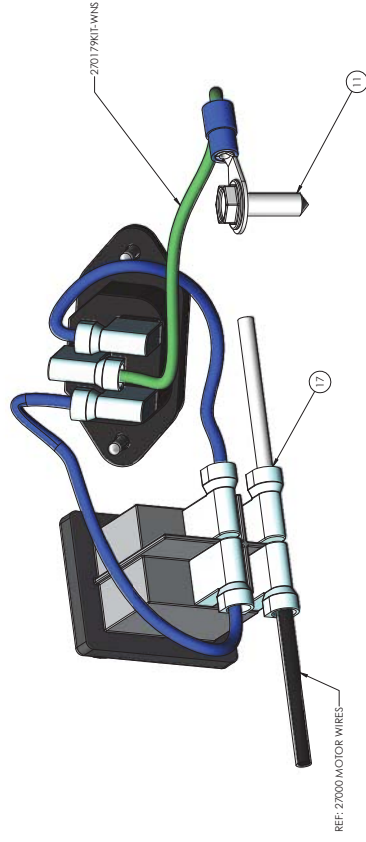








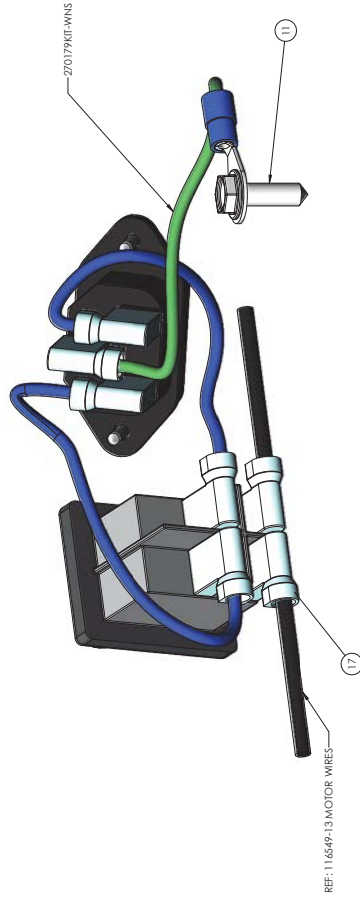




ITEM NO.	PART NO.	DESCRIPTION	DRAWING NO.	QTY.
1	8021	PROTECTION SCREEN, MOTOR HEAD		1
2	27004	MOTOR HEAD GASKET W/NS		1
3	2698111R	MOTOR HEAD GASKET		1
4	27007	SEPARATOR PLATE, W/NS MOTOR HEAD		1
5	27014	MOTOR HOUSING, SINGLE MOTOR		1
6	27015	HOUSING COVER, SINGLE MOTOR		1
7	8004	SUPPORT RING, SINGLE MOTOR		1
8	25211	MALE EC PLUG		1
9	27017	ROCKER SWITCH, 1000V/120W		2
10	27011	SCREW, #6 X 0.5		2
11	32989	HEX WASHER TIE SCREW, #10-16, .625LG		1
12	27001	MOTOR HEAD, ALUMINUM		1
13	27002	MOTOR, 2 STAGE, PD. 100W, 120V		1
14	25264	SCREW PHIL PH #8 X .50 ZINC		2
15	27003	SCREW PH PHIL #8 X .50 ZINC		3
16	27012	SCREW PH PHIL #8 X 2 ZINC		6
17	31715	TERMINAL, 90 DEGREE, 16-14 GAUGE BLUE		2
18	31505	TERMINAL, 312.5 RING, 14-14 GA. BLUE/W/NS		1

**PROPRIETARY AND CONFIDENTIAL**

THE INFORMATION CONTAINED IN THIS DRAWING IS THE SOLE PROPERTY OF RUMAC. ANY REPRODUCTION IN PART OR AS A WHOLE WITHOUT THE WRITTEN PERMISSIOIN OF RUMAC IS PROHIBITED.

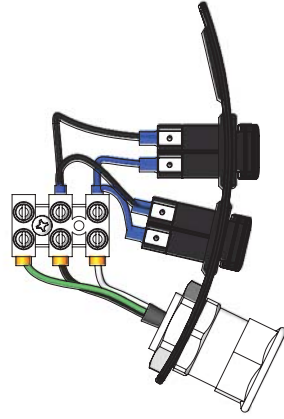


ITEM NO.	PART NO.	DESCRIPTION	DRAWING NO.	QTY.
1	8621	PROTECTOR SCREEN, MOTOR HEAD		1
2	27004	MOTOR HEAD GASKET, WINS		1
3	25081 IR	MOTOR HEAD GASKET		1
4	27007	SEPARATOR PLATE, WINS MOTOR HEAD		1
5	27014	MOTOR HOUSING, SINGLE MOTOR		1
6	27015	HOUSING COVER, SINGLE MOTOR		1
7	8604	SUPPORT RING, SINGLE MOTOR		1
8	25211	MALE ELEC PLUG		1
9	27017	ROCKER SWITCH, 1000/120W		1
10	27018	HEX WASHER, SCREEN 1/16, 429G		2
11	25080	MOTOR HEAD, ALUMINUM		1
12	27001	MOTOR HEAD, ALUMINUM		1
13	116549-13	MOTOR 2 STAGE, 1200W, 240V		1
14	25864	SCREW PHL #8 X 5/16" ZINC		3
15	27012	SCREW PHL #8 X 5/16" ZINC		2
16	27003	SCREW PHL #8 X 3/4" ZINC		4
17	37123	TERMINAL, 90 DEGREE, 16-14 GAUGE RJ45		2

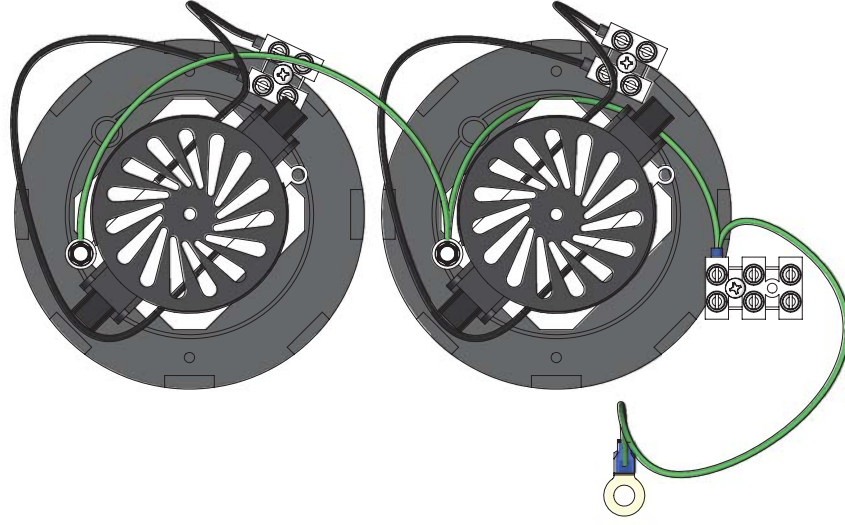
[illegible]



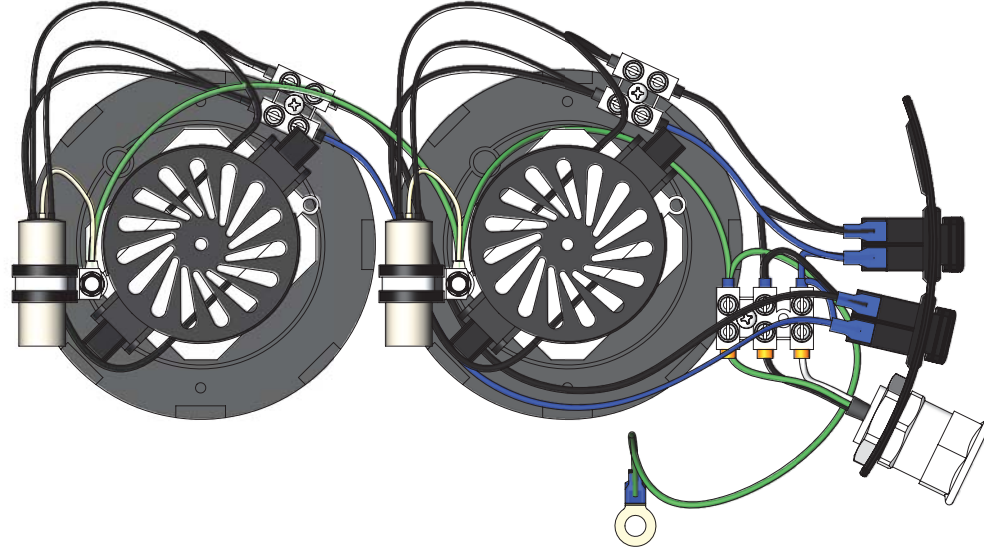
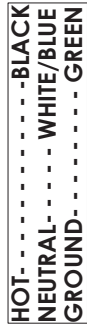




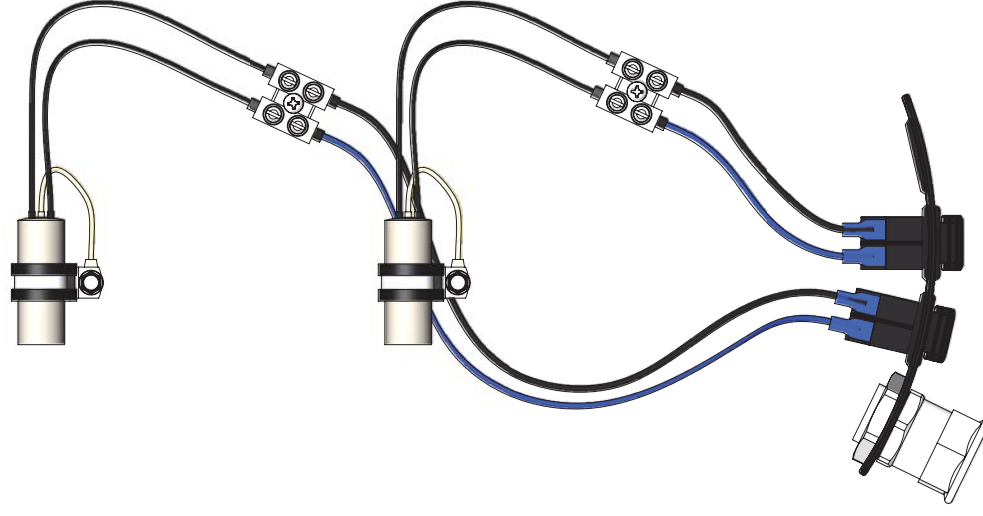
## POWER TO SWITCHES



## GROUND AND MOTOR



## COMPLETED ASSEMBLY

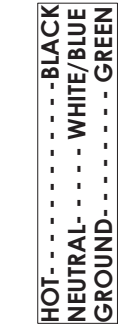


## SWITCHES TO TERMINAL BLOCKS

<b>FORWARD TO:</b> 845 WILSON ST TOMBALL, TX 77480-1040 HAYWARD, CA 94541		<b>DATE:</b> 12/24/76 <b>TIME:</b> 12:00 PM	
<b>TO:</b> WS 2 MOTOR SWITCH ASMA 240V		<b>REV:</b> 2 <b>OF:</b> 2	
<b>PROJECT:</b> PHZ07017A		<b>SCALE:</b> 1" = 1'-0"	
<b>DESCRIPTION:</b>		<b>WEIGHT:</b>	
<b>DATE:</b> 12/24/76		<b>SHEET:</b> 2 OF 2	



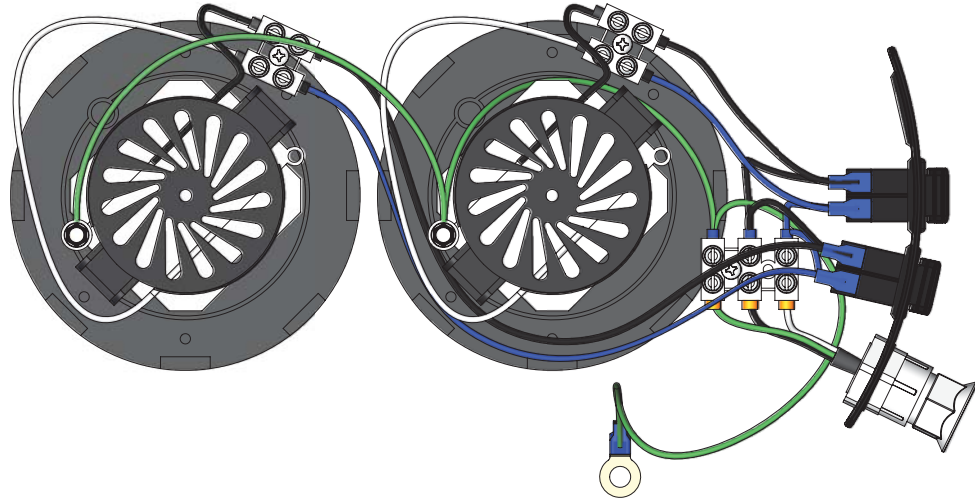


[illegible]

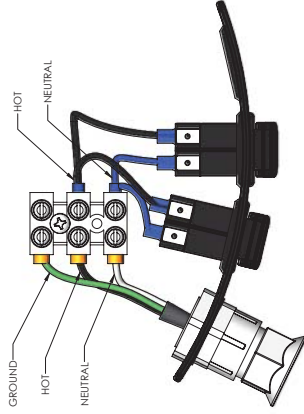




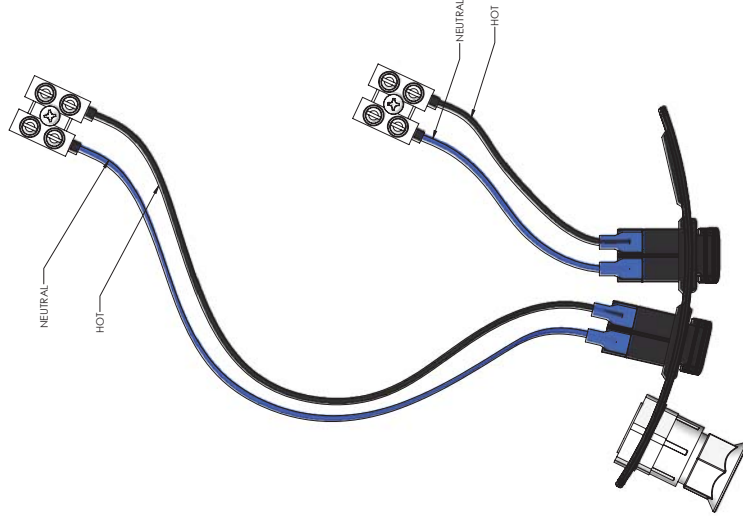
HOT-----BLACK  
NEUTRAL-----WHITE/BLUE  
GROUND-----GREEN



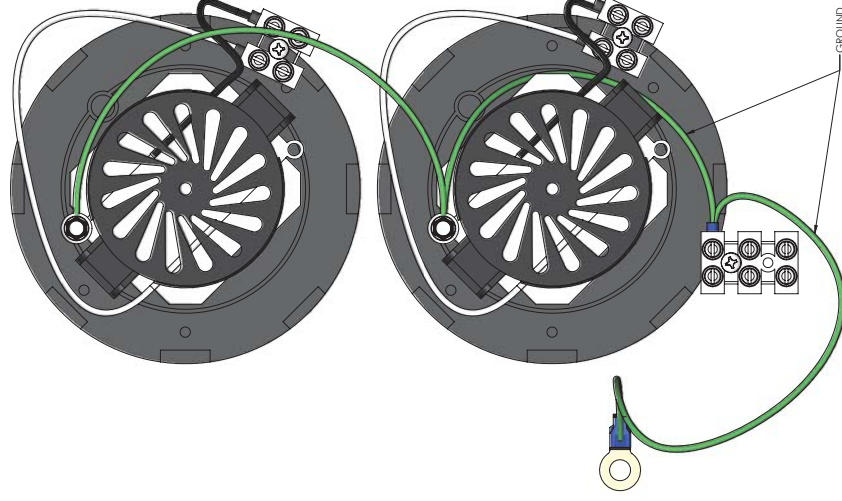
COMPLETED ASSEMBLY



POWER TO SWITCHES



SWITCHES TO TERMINAL BLOCKS



GROUND AND MOTOR

FOR INFORMATION ONLY  
THIS INFORMATION IS FOR INFORMATION ONLY  
IT IS NOT A REQUIREMENT FOR THE USER TO FOLLOW THESE INSTRUCTIONS  
THE USER MUST FOLLOW THE INSTRUCTIONS FOR THE PRODUCT THEY ARE USING

DATE	5/19/16	DATE	5/19/16	DATE	5/19/16
DESIGNED BY	SAWYER ST.	DESIGNED BY	SAWYER ST.	DESIGNED BY	SAWYER ST.
CHECKED BY		CHECKED BY		CHECKED BY	
APPROVED BY		APPROVED BY		APPROVED BY	
REVISIONS		REVISIONS		REVISIONS	
REV	1	REV	1	REV	1
DATE	5/19/16	DATE	5/19/16	DATE	5/19/16
DESCRIPTION	WS 2 MOTOR SWITCH ASM	DESCRIPTION	WS 2 MOTOR SWITCH ASM	DESCRIPTION	WS 2 MOTOR SWITCH ASM
SIZE	120V	SIZE	120V	SIZE	120V
SCALE	1:1	SCALE	1:1	SCALE	1:1
WEIGHT		WEIGHT		WEIGHT	
SHEET 2 OF 2		SHEET 2 OF 2		SHEET 2 OF 2	



## POWER TO SWITCHES

## SWITCHES TO TERMINAL BLOCKS

HOT	- - - - -	--BLACK
NEUTRAL	- - - - -	WHITE/BLUE
GROUND	- - - - -	GREEN

## COMPLETED ASSEMBLY

## GROUND AND MOTOR

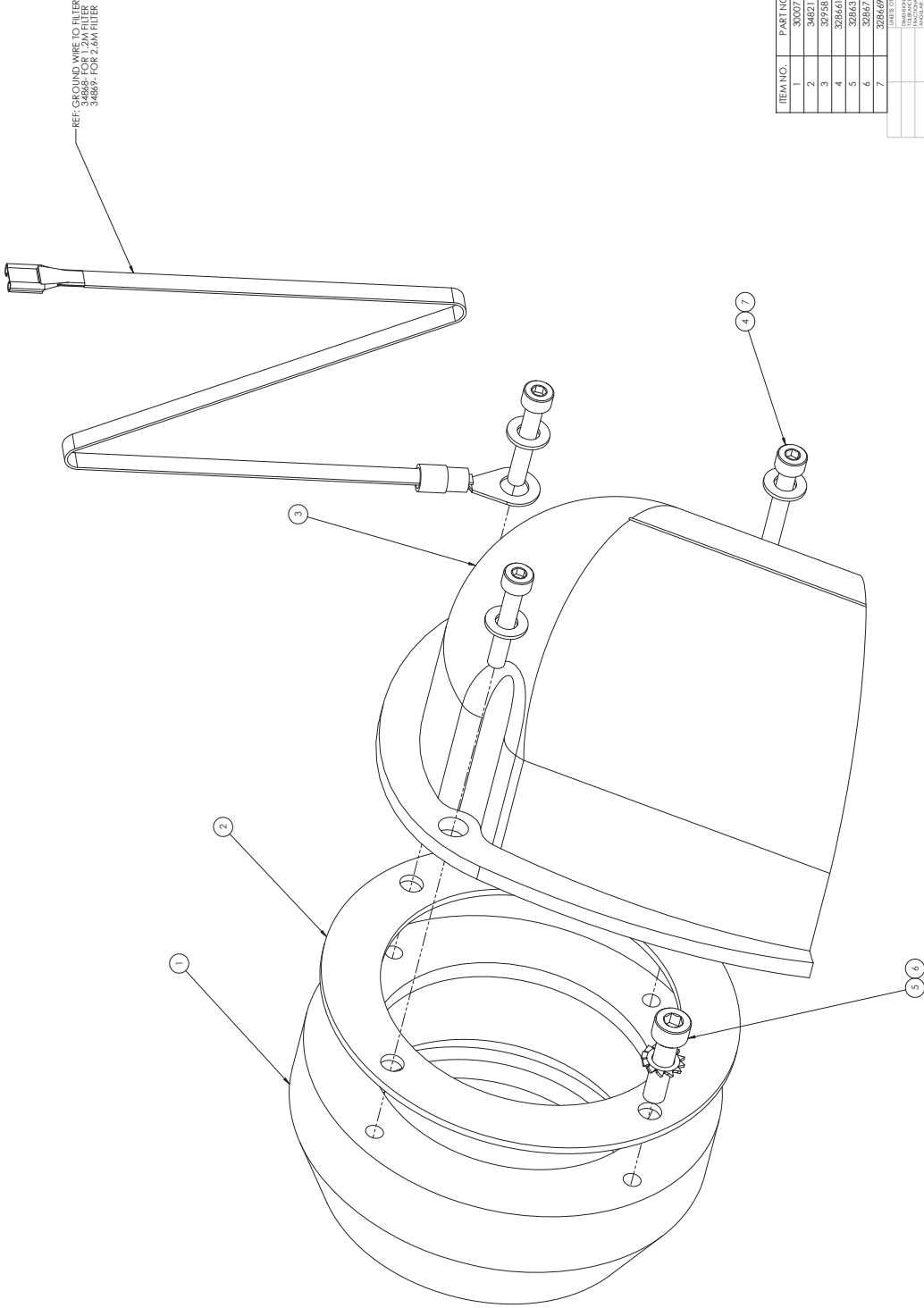
[illegible]





[illegible]

REVISION		
REV	DESCRIPTION	DATE
D	E.C.O. #717	12/22/09
E	E.C.O. #1129	4/30/15
F	ADDED GROUND WIRE REF. UPDATED HARDWARE ECO 1269	9/21/16



ITEM NO.	PART NO.	DESCRIPTION	QTY.
1	30007	INLET 70MM ALUMINUM	1
2	34821	70MM INLET GASKET	1
3	32958	DEFLECTOR 70MM ALU D11 WS	1
4	328661	BOLT M5 X 25 SOC HD BLACK	3
5	32863	SCREW SOC HD M5X20 BLACK OX	1
6	32863	WASHER PLAT M5X20 BLACK OX	1
7	308829	WASHER PLAT M5 X 25 WS	3

DATE	9/21/16	DATE	9/21/16
DESIGNED	BY	DESIGNED	BY
CHECKED	BY	CHECKED	BY
APPROVED	BY	APPROVED	BY
DATE	9/21/16	DATE	9/21/16
SCALE	2:1	SCALE	2:1
WEIGHT		WEIGHT	
REV	F	REV	F
DATE	9/21/16	DATE	9/21/16
DESCRIPTION	70MM INLET ASX, ALU DEFLECTOR, D1	DESCRIPTION	70MM INLET ASX, ALU DEFLECTOR, D1
SIZE	D	SIZE	D
QTY	30007A	QTY	30007A
SCALE	2:1	SCALE	2:1
WEIGHT		WEIGHT	

FOR INFORMATION ONLY: THIS DRAWING IS A REPRESENTATION OF THE DESIGN AND IS NOT A CONTRACT DOCUMENT. IT IS NOT TO BE USED FOR CONSTRUCTION OR FABRICATION OF PARTS OR ASSEMBLIES WITHOUT THE WRITTEN APPROVAL OF THE DESIGNER.







